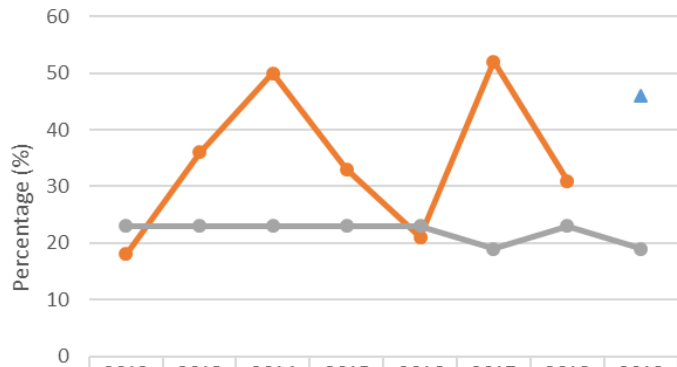




## Predators

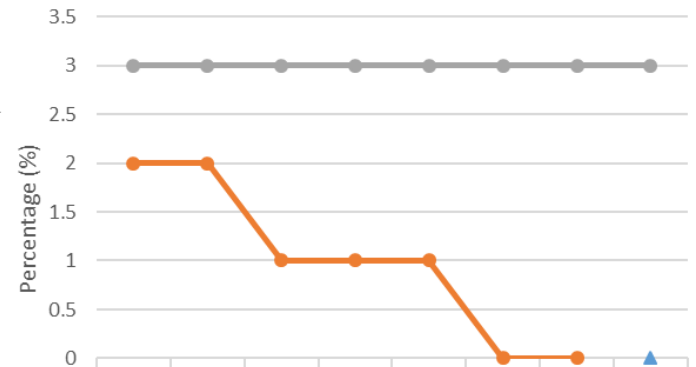
In a healthy ecosystem, the numbers of predators and prey are maintained within a narrow range. Extreme fluctuations in this balance signify that the ecosystem is sick.



	2012	2013	2014	2015	2016	2017	2018	2019
Fox Lake Location 1	18	36	50	33	21	52	31	
Fox Lake Location 2								46
Muskoka Average	23	23	23	23	23	19	23	19

## Shredders

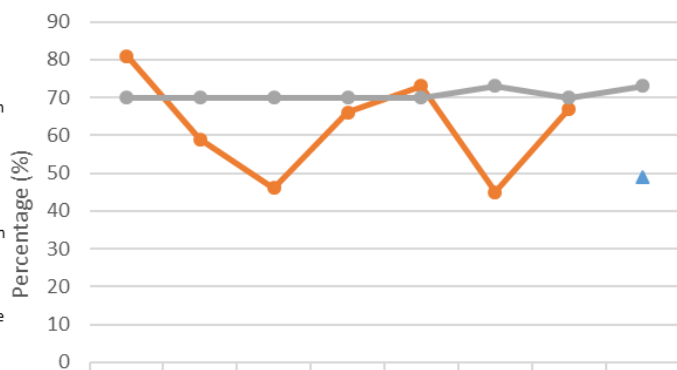
Shredders are a group of plant eaters adapted to breaking down leaves, wood, and other plant matter that originates on land but gets transported into waterbodies. Such animals should be abundant if there is a good connection between a lake and its watershed. In addition to recycling nutrients, shredders are food for other animals.



	2012	2013	2014	2015	2016	2017	2018	2019
Fox Lake Location 1	2	2	1	1	1	0	0	
Fox Lake Location 2								0
Muskoka Average	3	3	3	3	3	3	3	3

## Collectors/Gatherers

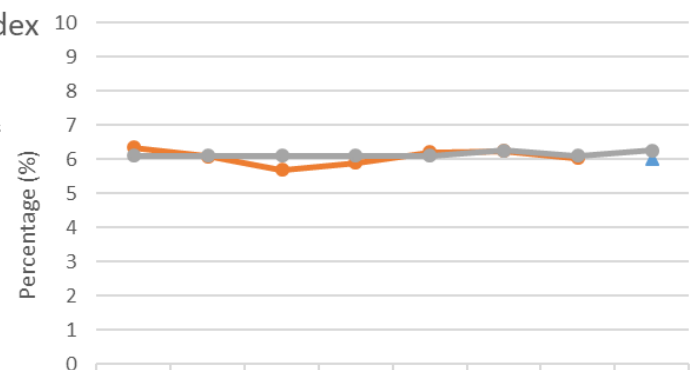
Collector-gatherers feed on small pieces of organic matter that arise from the processing activities of shredders (described above). Their presence indicates a good population of shredders, which provide them with food. Like shredders, these animals perform a vital role in energy cycling, and are prey for other animals.



	2012	2013	2014	2015	2016	2017	2018	2019
Fox Lake Location 1	81	59	46	66	73	45	67	
Fox Lake Location 2								49
Muskoka Average	70	70	70	70	70	73	70	73

## Hilsenhoff Index

The Hilsenhoff index combines information about the abundances of different types of animals collected at a site with information about those animals' sensitivities to sewage pollution, farm wastes, and other sources of nutrients like phosphorus, nitrogen, and carbon. High values of this index indicate pollution; low values indicate good water quality.



	2012	2013	2014	2015	2016	2017	2018	2019
Fox Lake Location 1	6.34	6.08	5.69	5.9	6.21	6.24	6.03	
Fox Lake Location 2								5.99
Muskoka Average	6.1	6.1	6.1	6.1	6.1	6.25	6.1	6.25